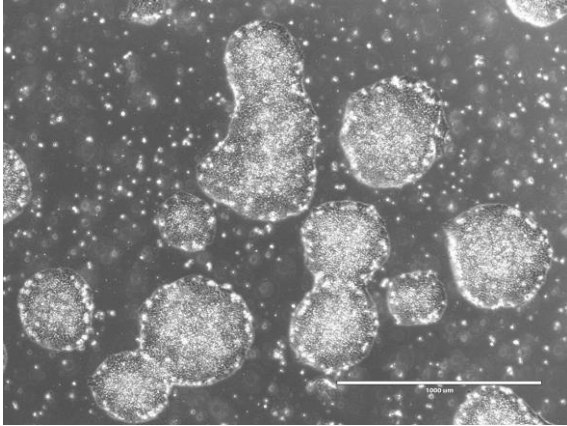
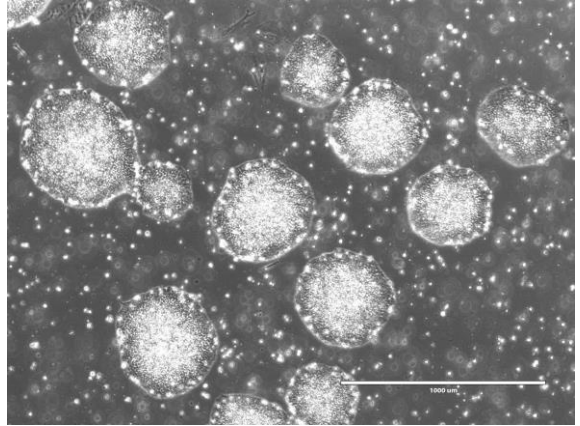


【 CiRA-j-1440 】 Morphology of iPSC colonies

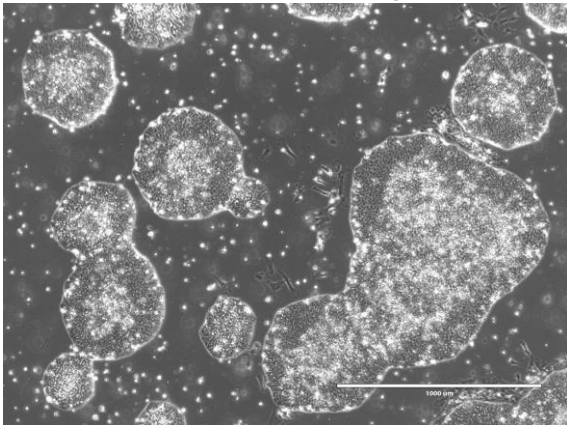
CiRA-j-1440-A: passage-3



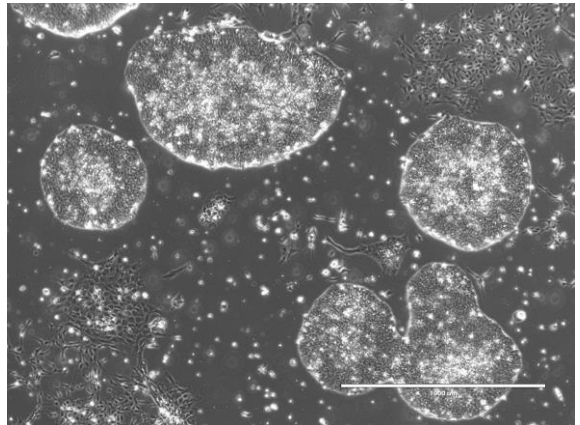
CiRA-j-1440-B: passage-3



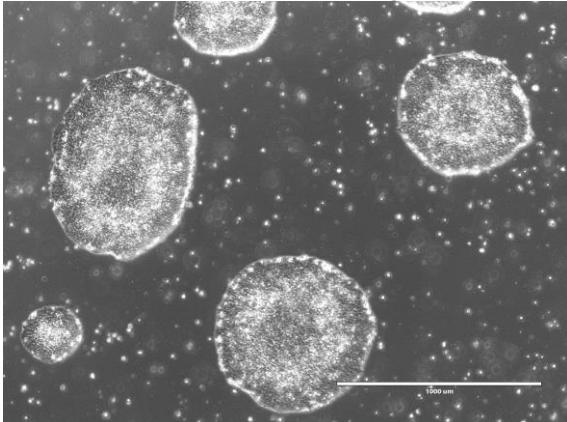
CiRA-j-1440-C: passage-3



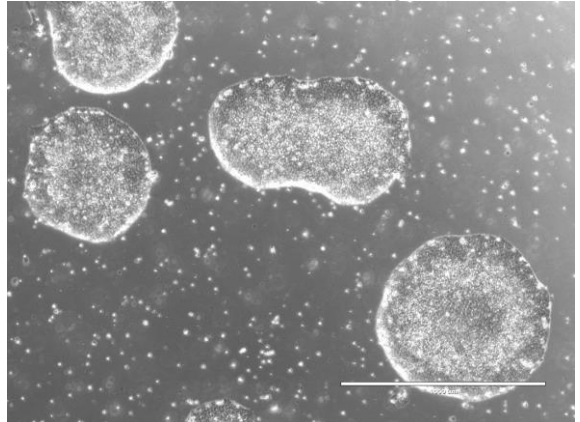
CiRA-j-1440-D: passage-3



CiRA-j-1440-E: passage-3



CiRA-j-1440-F: passage-3



(All images were captured at 4x magnification)